





Overlooking the majestic sweep of Chesil beach and the wide expanse of Lyme Bay on the world heritage site of Dorset's Jurassic Coast, The Seaside Boarding House is an oasis of relaxed sophistication. Inspired by a mixture of classic British Edwardian hotels and the Cape Cod paintings of Edward Hopper, The Seaside Boarding House Restaurant & Bar provides a unique collaboration of old and new.



THE PITT-RIVERS ROOM

The Pitt-Rivers Room has it's own bar and raised drinks area perfect for receptions as well as a wonderful sprung dance floor restored from the original hotel and of course a mirror ball.



RESTAURANT

The restaurant echoes of dining in gentler times; a whole wall of French windows overlooks the ever-changing panorama of the Lyme Bay seascape. From sunrise over Portland Bill to sunset over Start Point, whether awash with shimmering sea light or a shelter from the dramatic storms that can be tracked in from the Atlantic, this room must be one of Britain's finest sea view restaurants. With nightfall the drawn curtains shut off the elements, the lights come down and it transforms into a romantic dining room.



PITT-RIVERS
220 standing
60 at long tables
48 at round tables

RESTAURANT
70 standing
56 at long tables
40 at round tables

COMBINED
290 standing
110 seated



BAR
70 standing

LIBRARY
20 standing
10 seated



BAR

The bar is an elegant yet comfortable area, light and inviting by day, a warm cosy sanctuary by night. The wall of French windows, like the restaurant, gives this area access on to the terrace & frames the magnificent sea views.

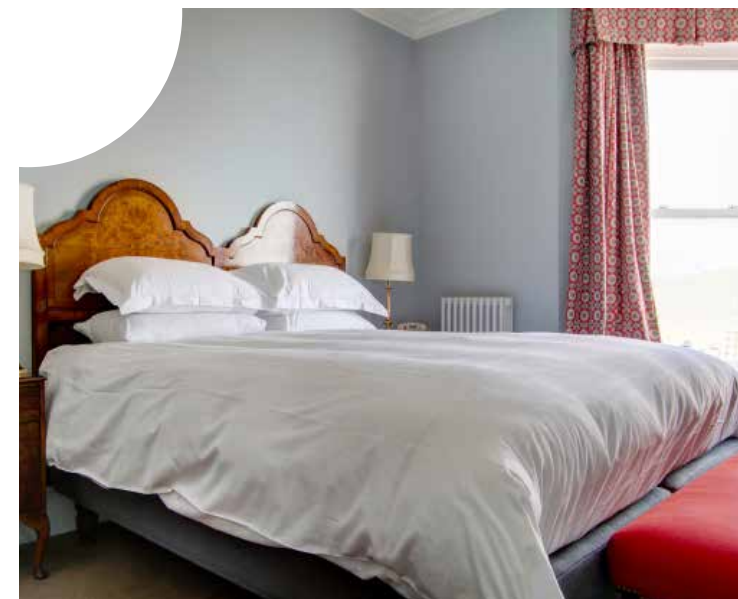
LIBRARY

The book-lined library, complete with armchairs & fireplace, make this the perfect space for small meetings & more intimate gatherings and celebrations.



FOOD & WINE

The menu at The Seaside Boarding House changes with the availability of the local seasonal produce. Though situated right on the sea our chefs incorporate the meat & game from local suppliers as well as the abundant seafood on our doorstep. Along with our classic wine & cocktail lists we can create a bespoke menu for any occasion.



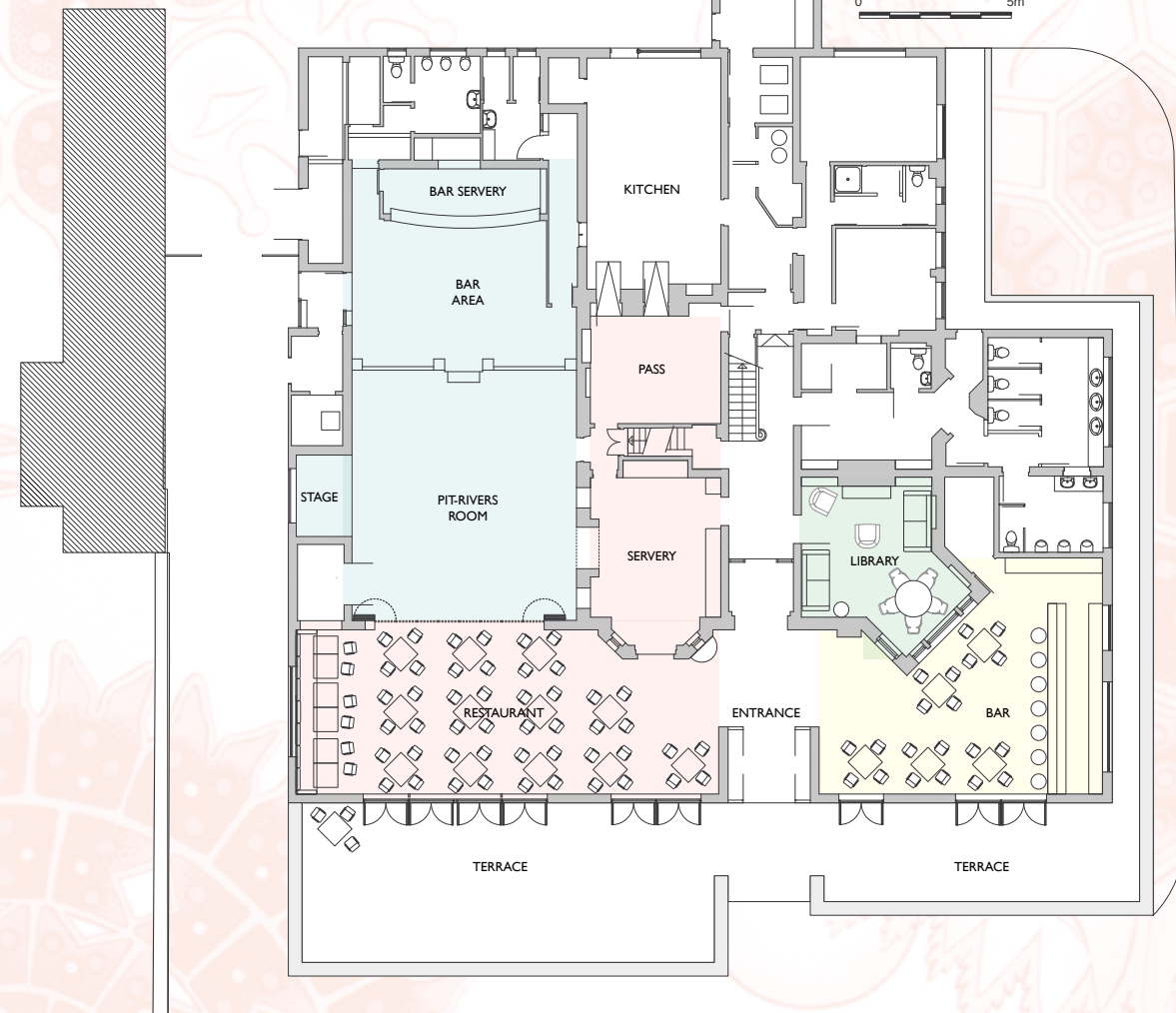
THE BEDROOMS

All of the nine large bedrooms have some view of the sea. The airy rooms at the front look out onto magnificent seascapes whilst the side and rear bedrooms look along the East and West coasts as well as the bucolic countryside that surrounds The Seaside Boarding House. Open any window at night and you will hear the lullaby of the breaking waves on the shore.

For a larger party, there are numerous comfortable B&B's & self-catering properties in the village of Burton Bradstock or in the market town of Bridport less than 3 miles away. Exclusive use of the venue is subject to the owner's discretion.

The whole space can be extended at an additional cost by erecting a marquee over the terrace.





If you require any more information that you don't find here or would like to discuss things in person, please contact us on:

☎ 01308 897 205

✉ info@theseasideboardinghouse.com

